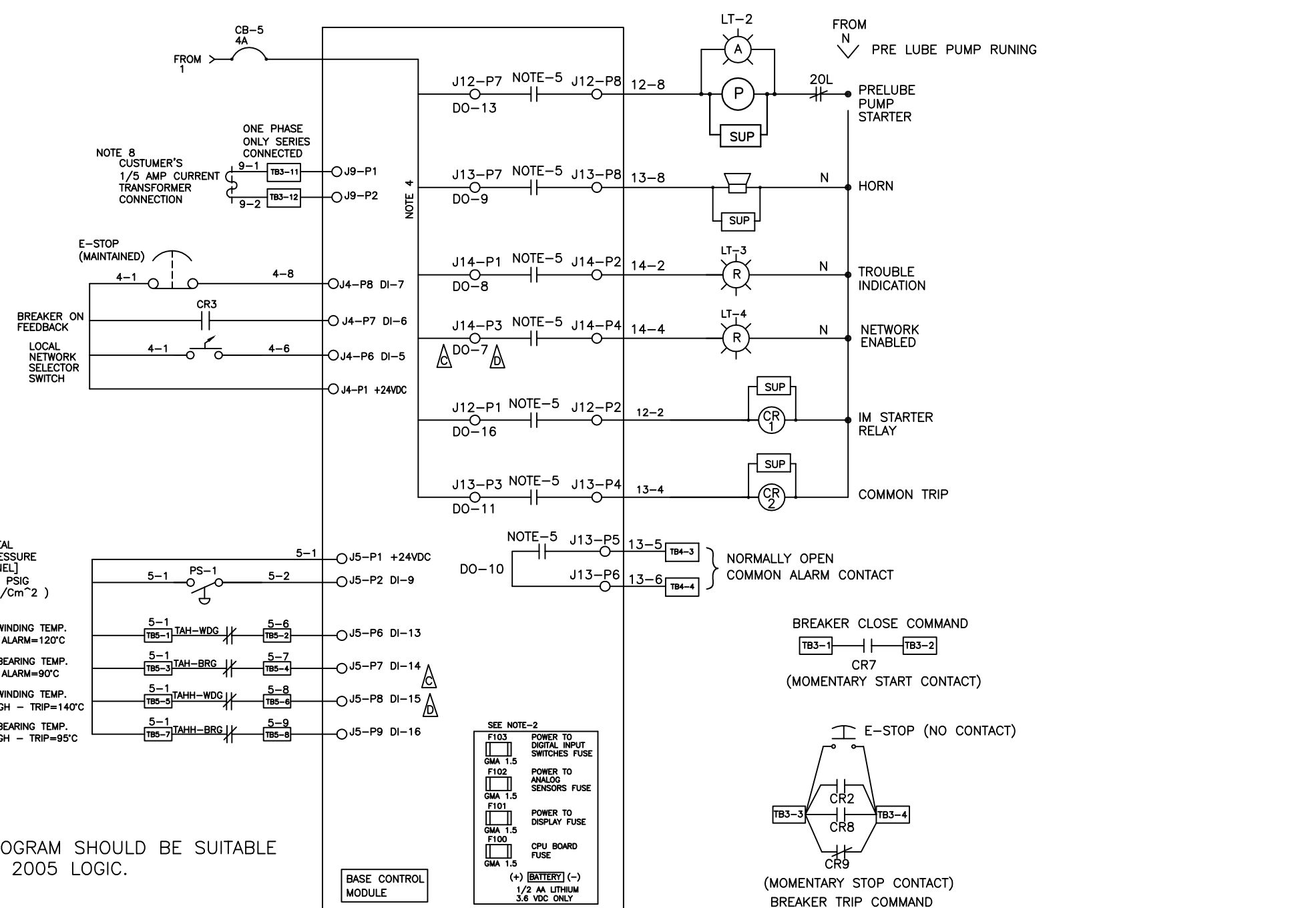
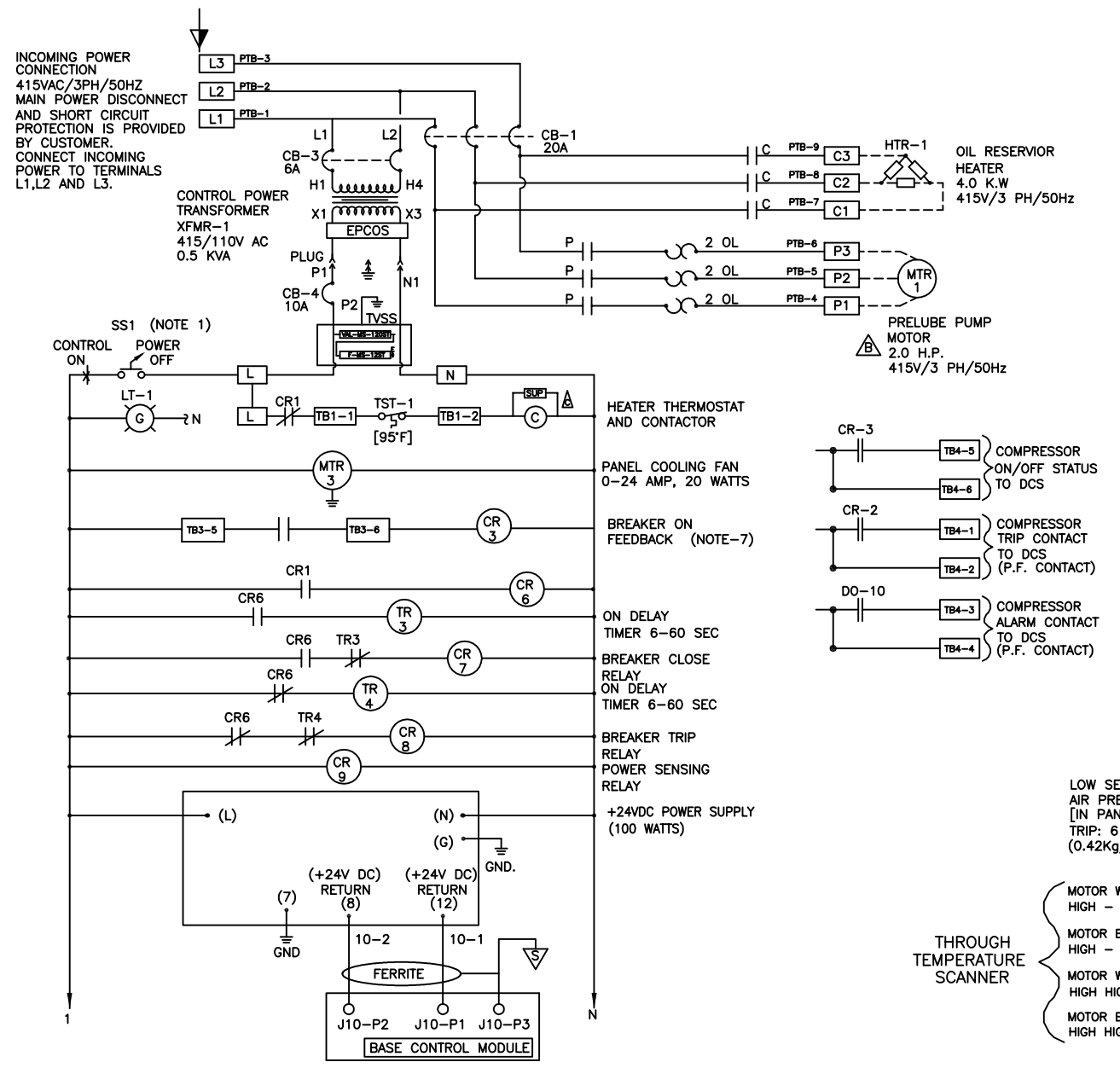


REVISIONS

REV	ECN	DESCRIPTION	DWN	APV	DATE
A	ENC04712	ORIGINAL RELEASE	YRU	NPP	05DEC11
B	ENC04887	REVISED TO CHANGE PUMP MOTOR HP	YRU	NPP	07FEB12
C	ENC04908	REVISED AS MARK , DI FOR SCNER CHANGED	YRU	NPP	15FEB12
D	ENC04934	REVISED AS MARK , PIN NO. CHANGE	MRS	NPP	29FEB12



UNIT SHOULD BE AS PER FOLLOWING TABLE :

LANGUAGE	PRESSURE	TEMP	VIBRATION
ENGLISH	PSIG	DEG F	MILS
ENGLISH	KG/CM ² G	DEG C	MILS

CMC PROGRAM SHOULD BE SUITABLE TO CMC 2005 LOGIC.

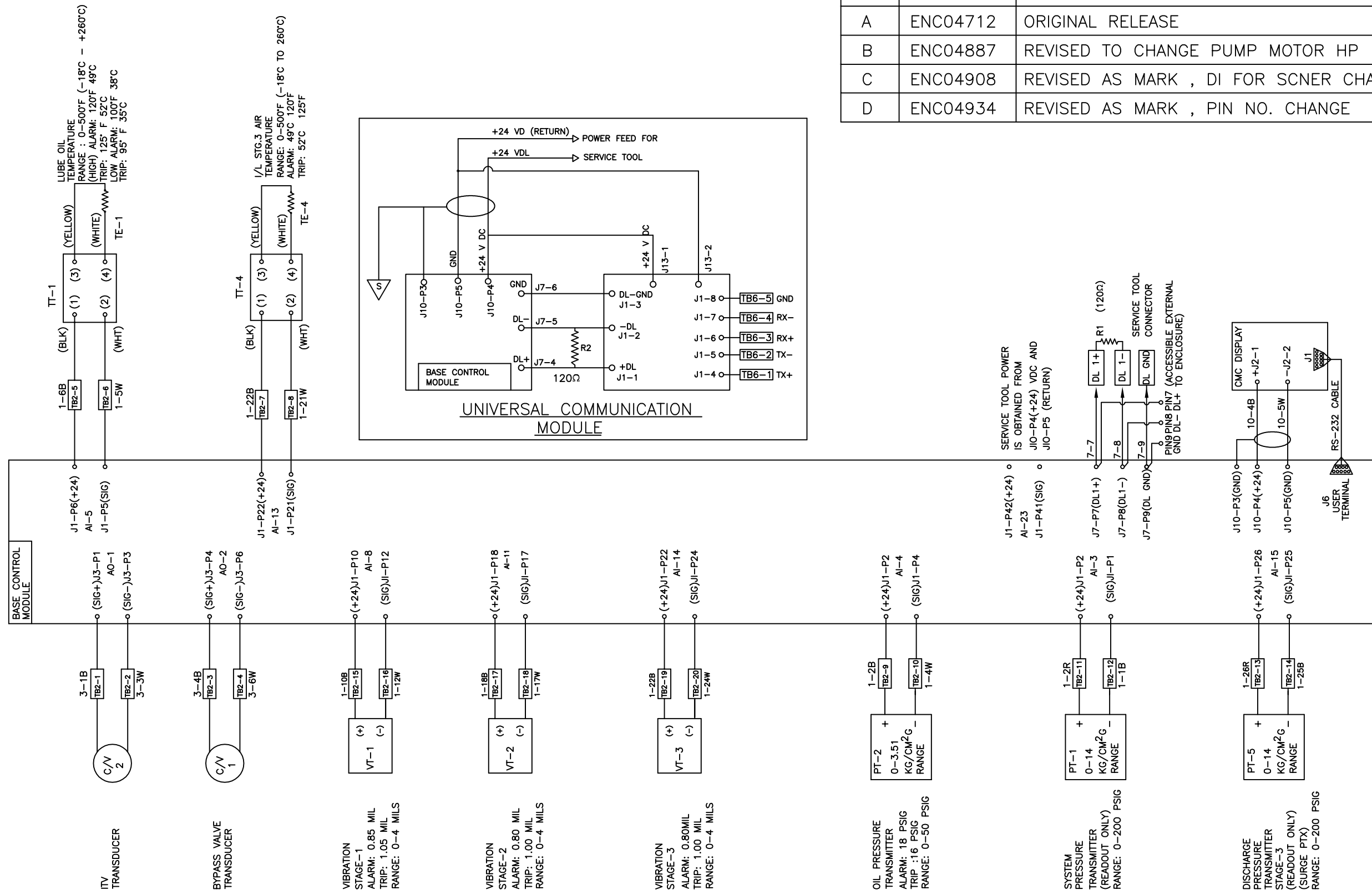
- NOTES :
- SS-1 is control supply on/off selector switch.
 - CMC BASE CONTROL MODULE BATTERY AND FUSES SHOULD BE I-R APPROVED COMPONENTS ONLY. THESE FUSES ARE FAST BLOW TYPE.
 - INSTRUMENTATION WIRE USED INSIDE CONTROL ENCLOSURE OR IN WIRING IS SHIELDED PAIR WIRE FOR 24V DC POWERED DEVICES.
 - THESE CONNECTIONS ARE THE POWER FEEDS TO THE INTERNAL BOARD RELAYS. TO RESTORE ANY RELAY TO A POTENTIAL FREE STATE. REMOVE THE WIRE THAT FEEDS POWER TO THE RELAY. INPUTS MUST BE CONNECTED TO A POWER SOURCE TO PROVIDE POWER TO THE OUTPUT.
 - THIS NORMALLY OPEN CONTACT IS INTEGRAL TO THE MICROCONTROLLER BOARD AND IS CONTROLLED BY THE PROGRAMMING OF THE MICROCONTROLLER.
 - ALL SWITCHES AND RELAY CONTACT ARE SHOWN IN THE DE-ENERGIZED STATE.
 - CUSTOMER TO WIRE A NORMALLY OPEN AUXILIARY CONTACT OF CIRCUIT BREAKER TO TERMINALS 4-1 & 4-7 IN I-R CONTROL PANEL. THIS CONTACT MUST CLOSE WHEN BREAKER IS CLOSED TO PROVIDE A "STARTER ENGAGED" SIGNAL TO I-R CONTROLLER.
 - CURRENT TRANSFORMER SHOULD BE SIZED IN 50 AMPERE INCREMENTS. EXAMPLE : 50, 100, ...1600 USE NO LESS THAN A 50:5 CT. SECONDARY SHOULD BE 1A OR 5A.

COPYRIGHT© 2001 INGERSOLL-RAND COMPANY ALL RIGHTS RESERVED DRAWING CONFORMS TO ASME Y14.5M - 1994	WARNING: THE EXPORT OR REEXPORT OF THIS DRAWING OR A PRODUCT PRODUCED BY THIS DRAWING IS SUBJECT TO U.S EXPORT ADMINISTRATION REGULATIONS AND OTHER APPLICABLE GOVERNMENTAL RESTRICTIONS OR REGULATIONS.	MICROFILM BLOWBACK SCALE 0 1 in	THIRD ANGLE PROJECTION	
	PROPRIETARY NOTICE THIS DOCUMENT CONTAINS CONFIDENTIAL AND TRADE SECRET INFORMATION, IS THE PROPERTY OF INGERSOLL-RAND COMPANY, AND IS GIVEN TO THE RECEIVER IN CONFIDENCE. THE RECEIVER BY RECEPTION AND RETENTION OF THE DOCUMENT ACCEPTS THE DOCUMENT IN CONFIDENCE AND AGREES THAT, EXCEPT AS AUTHORIZED IN WRITING BY INGERSOLL-RAND COMPANY, IT WILL (1) NOT USE THE DOCUMENT OR ANY COPY THEREOF OR THE CONFIDENTIAL OR TRADE SECRET INFORMATION THEREIN; (2) NOT COPY THE DOCUMENT; (3) NOT DISCLOSE TO OTHERS EITHER THE DOCUMENT OR THE CONFIDENTIAL OR TRADE SECRET INFORMATION THEREIN; AND (4) UPON COMPLETION OF THE NEED TO RETAIN THE DOCUMENT, OR UPON DEMAND, RETURN THE DOCUMENT, ALL COPIES THEREOF, AND ALL MATERIAL COPIED THEREFROM.	DRAWN: YRU DATE: 05DEC11 CHECKED: NPP DATE: 05DEC11 APPRVD: NPP DATE: 05DEC11 CHG. NOS. 42, 99 SCALE: DNA FSCM 6R484	TITLE: ELECTRICAL SCHEMATIC & CONTROL PANEL SIZE: B ECN: ENC04934 DWG NO.: 17442666 REV: D	

SIZE	ECN	DWG NO.	REV
B	ENC04934	17442666	D
WT.	UNIT	SHEET 1	OF 4

REVISIONS

REV	ECN	DESCRIPTION	DWN	APV	DATE
A	ENC04712	ORIGINAL RELEASE	YRU	NPP	05DEC11
B	ENC04887	REVISED TO CHANGE PUMP MOTOR HP	YRU	NPP	07FEB12
C	ENC04908	REVISED AS MARK , DI FOR SCNER CHANGED	YRU	NPP	15FEB12
D	ENC04934	REVISED AS MARK , PIN NO. CHANGE	MRS	NPP	29FEB12



LEGEND AND SYMBOLS

AI - ANALOG INPUT	(R) LIGHT (LETTER DESIGNATES LENS COLOR)
AO - ANALOG OUTPUT	(CR) CONTROL RELAY, STARTER, OR CONTACTOR
CB - CIRCUIT BREAKER	(H) HARNESS CONNECTOR
CR - CONTROL RELAY	(NO) NORMALLY OPEN CONTACT
CT - CURRENT TRANSFORMER	(NC) NORMALLY CLOSED CONTACT
DI - DISCRETE INPUT	(S) SHIELD TERMINAL BLOCK IN PANEL
DL - DATA LINK	(TB) TERMINAL BLOCK
DO - DISCRETE OUTPUT	(P) PLUG CONNECTION
FS - FLOW SWITCH	(C) CAPACITOR
GND - GROUND	(S) SHIELDED WIRING
I/Y - CURRENT TO PNEUMATIC SIGNAL TRANSDUCER	(SV) SOLENOID VALVE
LS - LEVEL SWITCH	(F) FUSE
LT - LIGHT	(SW) SELECTOR SWITCH
MTR - MOTOR	(X) HORN
PB - PUSH BUTTON	(SUP) ARC SUPPRESSOR
PDS - PRESSURE DIFFERENTIAL SWITCH	(CB) CIRCUIT BREAKER
PS - PRESSURE SWITCH	(G) GROUND
PT - PRESSURE TRANSMITTER	(T) THERMOSTAT
RX - RECEIVE	
SIG - SIGNAL	
SHLD - SHIELD	
TE - TEMPERATURE ELEMENT	
TM - THERMISTOR MODULE	
TST - THERMOSTAT	
TT - TEMPERATURE TRANSMITTER	
TX - TRANSMIT	
VT - VIBRATION TRANSMITTER	
XFMR - TRANSFORMER	

COLORS :
 B OR BLK - BLACK
 W OR WHT - WHITE
 R - RED
 A - AMBER
 G - GREEN

J INDICATES A TERMINAL STRIP ON THE BASE CONTROL MODULE, CMC DISPLAY OR UNIVERSAL COMMUNICATIONS MODULE.

J3-P10
 TERMINAL STRIP 3 PIN NUMBER 10

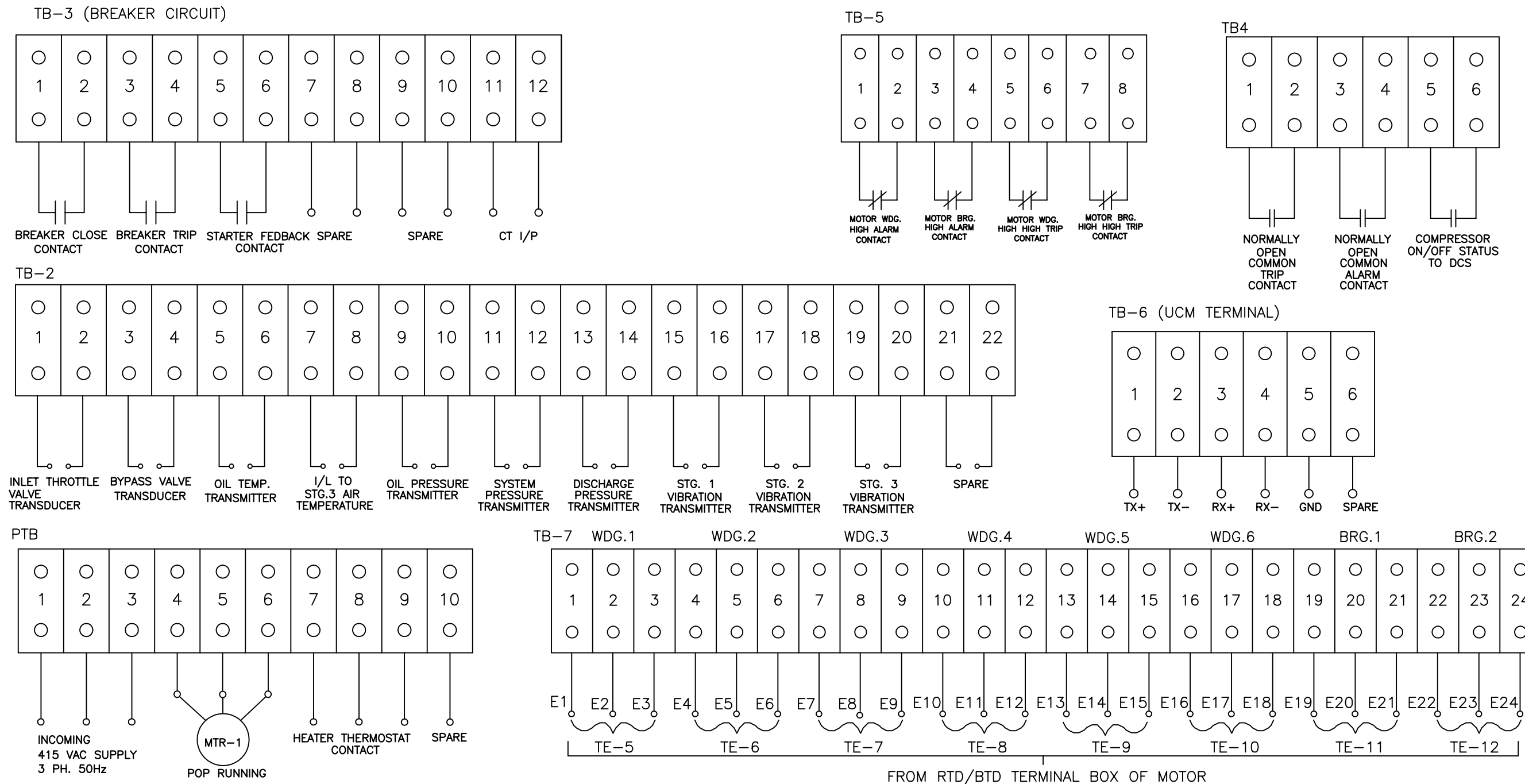
NOTE :
 1) THE ±24 VDC POWER IS DIVIDED BETWEEN ANALOG PAIRS E.G. A1-3 AND A1-4 SHARE POWER FROM A COMMON TERMINAL J1-P2. DIGITAL INPUT POWER IS SUPPLIED FROM TERMINALS J4-P1 AND J5-P1 ONLY.

COPYRIGHT © 2001 INGERSOLL-RAND COMPANY ALL RIGHTS RESERVED		WARNING: THE EXPORT OR REEXPORT OF THIS DRAWING OR A PRODUCT PRODUCED BY THIS DRAWING IS SUBJECT TO U.S. EXPORT ADMINISTRATION REGULATIONS AND OTHER APPLICABLE GOVERNMENTAL RESTRICTIONS OR REGULATIONS.		MICROFILM BLOWBACK SCALE 0 1 in		THIRD ANGLE PROJECTION							
DRAWING CONFORMS TO ASME Y14.5M - 1994		PROPRIETARY NOTICE THIS DOCUMENT CONTAINS CONFIDENTIAL AND TRADE SECRET INFORMATION, IS THE PROPERTY OF INGERSOLL-RAND COMPANY, AND IS GIVEN TO THE RECEIVER IN CONFIDENCE. THE RECEIVER BY RECEPTION AND RETENTION OF THE DOCUMENT ACCEPTS THE DOCUMENT IN CONFIDENCE AND AGREES THAT, EXCEPT AS AUTHORIZED IN WRITING BY INGERSOLL-RAND COMPANY, IT WILL (1) NOT USE THE DOCUMENT OR ANY COPY THEREOF OR THE CONFIDENTIAL OR TRADE SECRET INFORMATION THEREIN; (2) NOT COPY THE DOCUMENT; (3) NOT DISCLOSE TO OTHERS EITHER THE DOCUMENT OR THE CONFIDENTIAL OR TRADE SECRET INFORMATION THEREIN; AND (4) UPON COMPLETION OF THE NEED TO RETAIN THE DOCUMENT, OR UPON DEMAND, RETURN THE DOCUMENT, ALL COPIES THEREOF, AND ALL MATERIAL COPIED THEREFROM.		DRAWN YRU DATE 05DEC11		CHECKED NPP DATE 05DEC11				TITLE ELECTRICAL SCHEMATIC & CONTROL PANEL			
				CHG. NOS. 42, 99		SIZE B		ECN ENC04934		DWG NO. 17442666		REV D	
				SCALE DNA		FSCM 6R484		WT.		UNIT		SHEET 2 OF 4	

REVISIONS

REV	ECN	DESCRIPTION	DWN	APV	DATE
A	ENC04712	ORIGINAL RELEASE	YRU	NPP	05DEC11
B	ENC04887	REVISED TO CHANGE PUMP MOTOR HP	YRU	NPP	07FEB12
C	ENC04908	REVISED AS MARK , DI FOR SCNER CHANGED	YRU	NPP	15FEB12
D	ENC04934	REVISED AS MARK , PIN NO. CHANGE	MRS	NPP	29FEB12

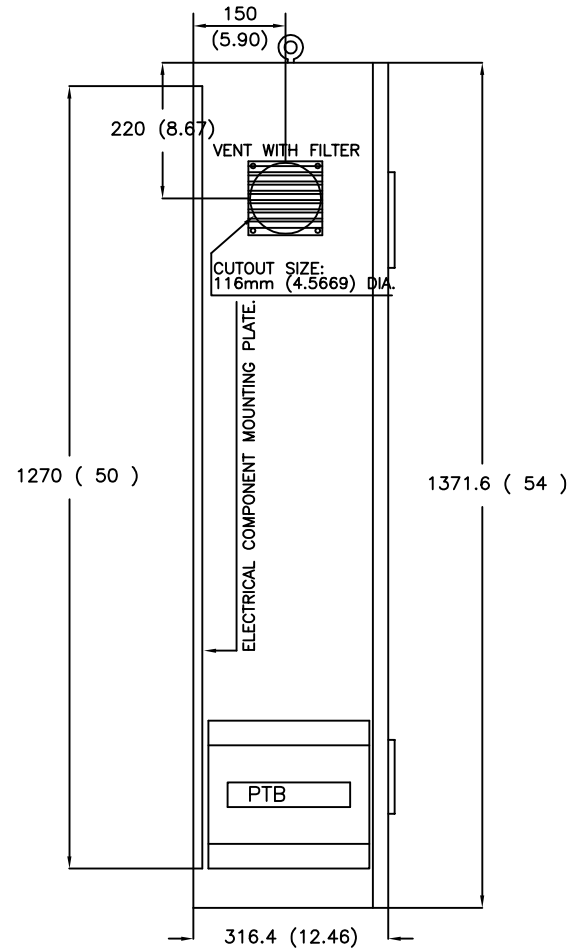
TERMINAL ARRANGEMENT



COPYRIGHT © 2001 INGERSOLL-RAND COMPANY ALL RIGHTS RESERVED DRAWING CONFORMS TO ASME Y14.5M - 1994	WARNING: THE EXPORT OR REEXPORT OF THIS DRAWING OR A PRODUCT PRODUCED BY THIS DRAWING IS SUBJECT TO U.S. EXPORT ADMINISTRATION REGULATIONS AND OTHER APPLICABLE GOVERNMENTAL RESTRICTIONS OR REGULATIONS.	MICROFILM BLOWBACK SCALE 0 1 in	THIRD ANGLE PROJECTION		
	PROPRIETARY NOTICE THIS DOCUMENT CONTAINS CONFIDENTIAL AND TRADE SECRET INFORMATION, IS THE PROPERTY OF INGERSOLL-RAND COMPANY, AND IS GIVEN TO THE RECEIVER IN CONFIDENCE. THE RECEIVER BY RECEPTION AND RETENTION OF THE DOCUMENT ACCEPTS THE DOCUMENT IN CONFIDENCE AND AGREES THAT, EXCEPT AS AUTHORIZED IN WRITING BY INGERSOLL-RAND COMPANY, IT WILL (1) NOT USE THE DOCUMENT OR ANY COPY THEREOF OR THE CONFIDENTIAL OR TRADE SECRET INFORMATION THEREIN; (2) NOT COPY THE DOCUMENT; (3) NOT DISCLOSE TO OTHERS EITHER THE DOCUMENT OR THE CONFIDENTIAL OR TRADE SECRET INFORMATION THEREIN; AND (4) UPON COMPLETION OF THE NEED TO RETAIN THE DOCUMENT, OR UPON DEMAND, RETURN THE DOCUMENT, ALL COPIES THEREOF, AND ALL MATERIAL COPIED THEREFROM.		DRAWN: YRU, DATE: 05DEC11 CHECKED: NPP, DATE: 05DEC11 APPRVD: NPP, DATE: 05DEC11 CHG. NOS.: 42, 99 SCALE: DNA FSCM 6R484		
			WT.	UNIT	SHEET 3 OF 4

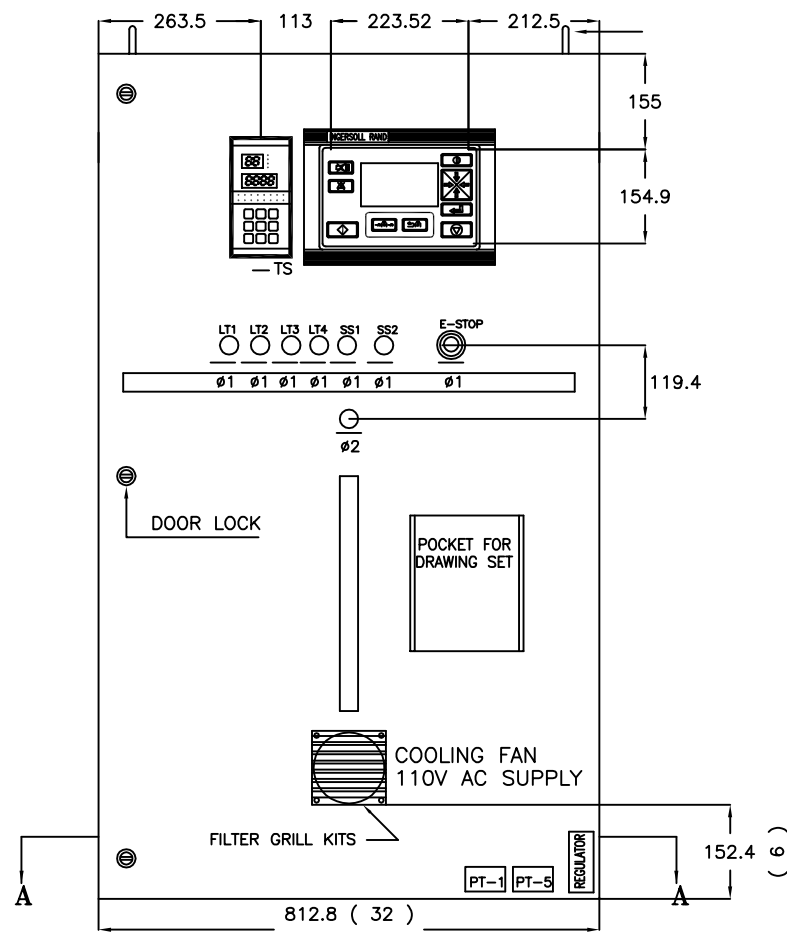
REVISIONS

REV	ECN	DESCRIPTION	DWN	APV	DATE
A	ENC04712	ORIGINAL RELEASE	YRU	NPP	05DEC11
B	ENC04887	REVISED TO CHANGE PUMP MOTOR HP	YRU	NPP	07FEB12
C	ENC04908	REVISED AS MARK , DI FOR SCNER CHANGED	YRU	NPP	15FEB12
D	ENC04934	REVISED AS MARK , PIN NO. CHANGE	MRS	NPP	29FEB12

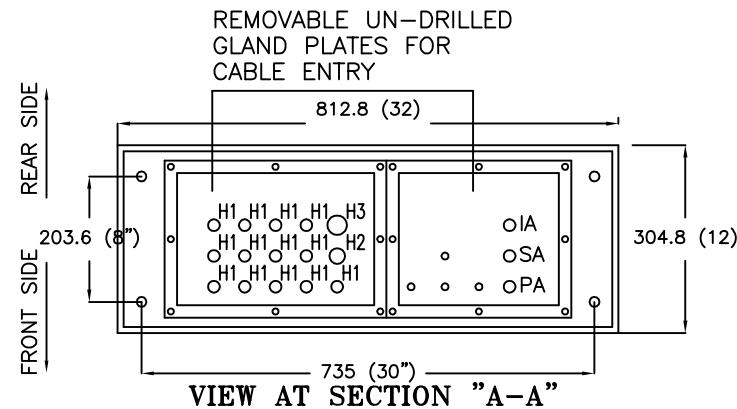


L.H. SIDE VIEW

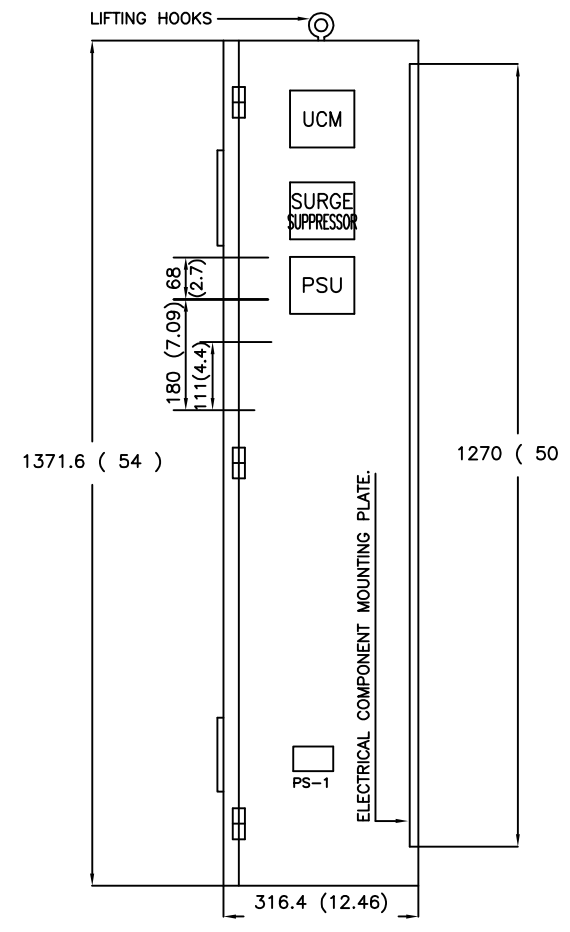
- LEGEND:-
PANEL CONNECTION
H1 = 19.05 DIA. (0.75)
H2 = 20.4 DIA. (1)
H3 = 31.75 DIA. (1.25)
PA = 20 DIA. (0.79)
SA = 20 DIA. (0.79)
IA = 20 DIA. (0.79)
PT5 = 11.5 DIA. (0.45)
PT1 = 11.5 DIA. (0.45)
Ø1 = 22.352 (.88)
Ø2 = 21.844 (.86)



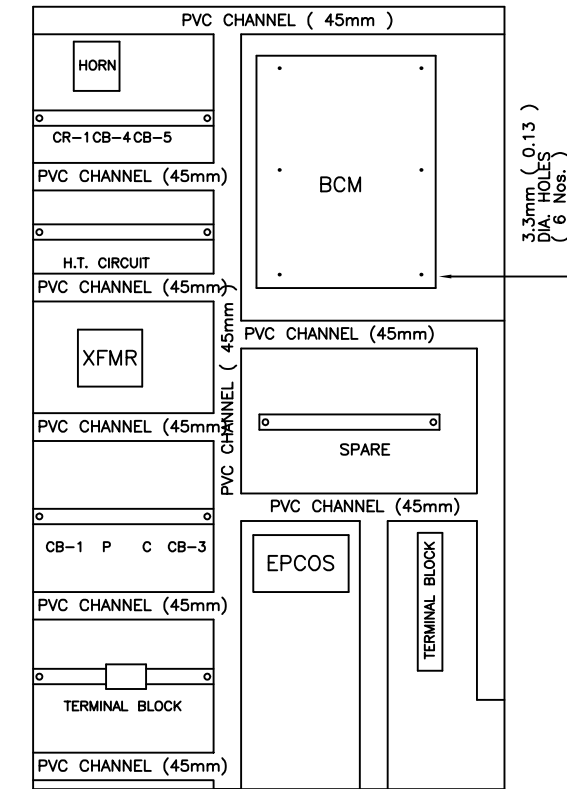
FRONT VIEW



VIEW AT SECTION "A-A"



R.H. SIDE VIEW



ELECTRICAL COMPONENT MOUNTING PLATE

LT1	CONTROL SUPPLY ON/OFF
LT2	PUMP RUNNING
LT3	TROUBLE
LT4	NETWORK ENABLE
SS1	CONTROL SUPPLY ON/OFF SWITCH
SS2	LOCAL/NETWORK SELECTOR SWITCH
E-STOP	E-STOP PUSH BUTTON

NOTES:-

- UNLESS SPECIFIED OTHERWISE ALL DIMENSION ARE IN mm.
- PANEL CABINET TO BE FABRICATED USING 2.5mm CRCA SHEET.
- ALL WELDED JOINTS TO BE TACK WELDED USING ELECTRIC WELDING.
- STEPS FOR PAINTING
 - CLEANING, DE-RUSTING & PHOSPHATING.
 - TWO COATS OF PRIMER.
 - APPLICATION OF FILLER ON EXTERNAL FACES FOR SURFACE FINISH.
 - TWO COATS OF FINAL PAINTS AS PER SHADE MUNSELL 3.6Y 7.31/2.9
- DOOR TO BE PROVIDED WITH RUBBER GASKET.
- DOOR TO OPEN BY 90 DEG.
- PANEL PROTECTION IP:54 AS PER IS: 2147 (MEMA-12)

COPYRIGHT© 2001 INGERSOLL-RAND COMPANY ALL RIGHTS RESERVED		WARNING: THE EXPORT OR REEXPORT OF THIS DRAWING OR A PRODUCT PRODUCED BY THIS DRAWING IS SUBJECT TO U.S EXPORT ADMINISTRATION REGULATIONS AND OTHER APPLICABLE GOVERNMENTAL RESTRICTIONS OR REGULATIONS.		MICROFILM BLOWBACK SCALE 0 1 in		THIRD ANGLE PROJECTION			
DRAWING CONFORMS TO ASME Y14.5M - 1994		PROPRIETARY NOTICE		DRAWN YRU DATE 05DEC11		CHECKED NPP DATE 05DEC11		TITLE ELECTRICAL SCHEMATIC & CONTROL PANEL	
THIS DOCUMENT CONTAINS CONFIDENTIAL AND TRADE SECRET INFORMATION, IS THE PROPERTY OF INGERSOLL-RAND COMPANY, AND IS GIVEN TO THE RECEIVER IN CONFIDENCE. THE RECEIVER BY RECEPTION AND RETENTION OF THE DOCUMENT ACCEPTS THE DOCUMENT IN CONFIDENCE AND AGREES THAT, EXCEPT AS AUTHORIZED IN WRITING BY INGERSOLL-RAND COMPANY, IT WILL (1) NOT USE THE DOCUMENT OR ANY COPY THEREOF OR THE CONFIDENTIAL OR TRADE SECRET INFORMATION THEREIN; (2) NOT COPY THE DOCUMENT; (3) NOT DISCLOSE TO OTHERS EITHER THE DOCUMENT OR THE CONFIDENTIAL OR TRADE SECRET INFORMATION THEREIN; AND (4) UPON COMPLETION OF THE NEED TO RETAIN THE DOCUMENT, OR UPON DEMAND, RETURN THE DOCUMENT, ALL COPIES THEREOF, AND ALL MATERIAL COPIED THEREFROM.		CHG. NOS. 42, 99		SCALE DNA		FSCM 6R484		SIZE B	
				ECN ENC04934		DWG NO. 17442666		REV D	
				WT.		UNIT		SHEET 4 OF 4	